



nag

Follow the Expert

SERVER EQUIPMENT CATALOGUE

LINE OF SERVERS SNR SCALABLE GEN 34

SNR-SR1304RS4

SNR-SR1310RS5

SNR-SR2308RS6

SNR-SR2312RS7

SNR-SR2325RS8

SNR-SR4324RS9

SNR-SR4336RS10

LINE OF SERVERS SNR AMD EPYC 7002 / 7003.....11

SNR-SR1204RE11

SNR-SR1210RE12

SNR-SR2208RE13

SNR-SR2212RE14

SNR-SR2225RE15

SNR-SR4224RE16

SNR-SR4236RE17

LINE OF SERVERS SNR SCALABLE GEN 218

SNR-SR1204RS18

SNR-SR1210RS19

SNR-SR2208RS20

SNR-SR2212RS21

SNR-SR2225RS22

SNR-SR4224RS23

SNR-SR4236RS24

LINE OF SERVERS SNR GPU25

SNR-SR4210GPU25

ACCESSORIES FOR SERVERS SNR..... 26





SNR-SR1304RS

- Modular design
- Intel Xeon Scalable Gen 3 Processor
- Up to 12TB DDR4 ECC RDIMM
- Up to 4 pcs 2.5"/3.5" SATA/SAS Hot Swappable
- 550W Power Supply - 2pcs

MAIN FEATURES

Specifications			
Motherboard chipset	Intel C621A	Carriers for hard drives	Yes
Number of sockets for the processor	2	Number of PCI-E expansion slots	1 (Up to 2)
Processor family	Intel Xeon Scalable Gen 3	Rails for 19" rack	Yes
Type of RAM	DDR4	Socket	LGA 4189
Maximum amount of RAM, TB	12	ECC memory support	Yes
Number of RAM slots	32	Type of installed radiators	Standard efficiency radiator
The form factor of hard drive bays	LFF 3,5" / SFF 2,5"	Device type	Server platform
Number of hard drive bays	4		
Management and monitoring			
Control port	10/100/1000BaseT		
Interfaces			
10/100/1000BaseT interfaces	2		
Power			
Supply voltage	220V AC		
Power supply units (PSU)	2		
Power per PSU, W	550		
Physical characteristics			
Operating temperature range, °C	from 10 to 35		
Chassis dimension	1U		

ORDERING INFORMATION

SNR-SR1304RS	1U SNR-SR1304RS server platform, supporting up to two Intel Xeon Scalable Gen3 processors, DDR4, 4x2.5"/3.5" HDD, 2x1000Base-T, two 550W redundant power supply units
--------------	---



SNR-SR1310RS

- Modular design
- Intel Xeon Scalable Gen 3 Processor
- Up to 12TB DDR4 ECC RDIMM
- Up to 10 pcs 2.5" SATA Hot Swappable
- 550W power supply units - 2 pcs

MAIN FEATURES

Specifications			
Motherboard chipset	Intel C621A	Carriers for hard drives	Yes
Number of sockets for the processor	2	Number of PCI-E expansion slots	1 (Up to 2)
Processor family	Intel Xeon Scalable Gen 3	Rails for 19" rack	Yes
Type of RAM	DDR4	Socket	LGA 4189
Maximum amount of RAM, TB	12	ECC memory support	Yes
Number of RAM slots	32	Type of installed radiators	Standard efficiency radiator
The form factor of hard drive bays	SFF 2,5"	Device type	Server platform
Number of hard drive bays	10		
Management and monitoring			
Control port	10/100/1000BaseT		
Интерфейсы			
10/100/1000BaseT interfaces	2		
Power supply			
Supply voltage	220V AC		
Power supply units (PSU)	2		
Power per PSU, W	550		
Physical characteristics			
Operating temperature range, °C	from 10 to 35		
Chassis dimension	1U		

ORDERING INFORMATION

SNR-SR1310RS	1U SNR-SR1310RS server platform, supporting up to two Intel Xeon Scalable Gen3 processors, DDR4, 10x2.5" SATA HDD, 2x1000Base-T, two 550W redundant power supplies
--------------	--



SNR-SR2308RS

- Modular construction
- Intel Xeon Scalable Gen 3 Processor
- Up to 12TB DDR4 ECC RDIMM
- Up to 8 pcs 2.5"/3.5" SATA Hot Swappable
- 800W Power Supply - 2pcs

MAIN FEATURES

Specifications			
Motherboard chipset	Intel C621A	Carriers for hard drives	Yes
Number of sockets for the processor	2	Number of PCI-E expansion slots	3 (Up to 10)
Processor family	Intel Xeon Scalable Gen 3	Rails for 19" rack	Yes
Type of RAM	DDR4	Socket	LGA 4189
Maximum amount of RAM, TB	12	ECC memory support	Yes
Number of RAM slots	32	Type of installed radiators	Standard efficiency radiator
The form factor of hard drive bays	LFF 3,5" / SFF 2,5"	Device type	Server platform
Number of hard drive bays	8		
Management and monitoring			
Control port	10/100/1000BaseT		
Interfaces			
10/100/1000BaseT interfaces	2		
Power supply			
Supply voltage	220V AC		
Power supply units (PSU)	2		
Power per PSU, W	800		
Physical characteristics			
Operating temperature range, °C	from 10 to 35		
Chassis dimension	2U		

ORDERING INFORMATION

SNR-SR2308RS	2U SNR-SR2308RS server platform, supporting up to two Intel Xeon Scalable Gen3 processors, DDR4, 8x2.5"/3.5" SATA HDD, 2x1000Base-T, two 800W redundant power supplies
--------------	--



SNR-SR2312RS

- Modular construction
- Intel Xeon Scalable Gen 3 Processor
- Up to 12TB DDR4 ECC RDIMM
- Up to 12 pcs 2.5"/3.5" SATA/SAS Hot Swappable
- 800W power supply - 2 pcs

MAIN FEATURES

Specifications			
Motherboard chipset	Intel C621A	Carriers for hard drives	Yes
Number of sockets for the processor	2	Number of PCI-E expansion slots	3 (up to 10)
Processor family	Intel Xeon Scalable Gen 3	Rails for 19" rack	Yes
Type of RAM	DDR4	Socket	LGA 4189
Maximum amount of RAM, TB	12	ECC memory support	Yes
Number of RAM slots	32	Type of installed radiators	Standard efficiency radiator
The form factor of hard drive bays	LFF 3,5" / SFF 2,5"	Device type	Server platform
Number of hard drive bays	12		
Management and monitoring			
Control port	10/100/1000BaseT		
Interfaces			
10/100/1000BaseT interfaces	2		
Power supply			
Supply voltage	220V AC		
Power supply units (PSU)	2		
Power per PSU, W	800		
Physical characteristics			
Operating temperature range, °C	from 10 to 35		
Chassis dimension	2U		

ORDERING INFORMATION

SNR-SR2312RS	2U SNR-SR2312RS server platform, supporting up to two Intel Xeon Scalable Gen 3 processors, DDR4, 12x2.5"/3.5" SATA HDD, 2x1000Base-T, two 800W redundant power supplies
--------------	--



SNR-SR2325RS

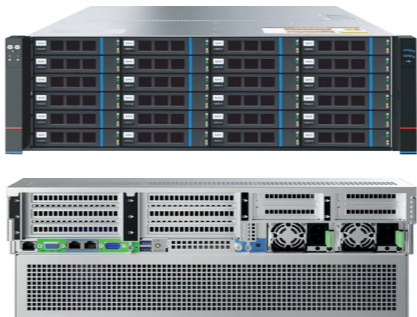
- Modular construction
- Intel Xeon Scalable Gen 3 Processor
- Up to 12TB DDR4 ECC RDIMM
- Up to 25 pcs 2.5" SATA/SAS Hot-swappable
- 800W power supply - 2 pcs

MAIN FEATURES

Specifications			
Motherboard chipset	Intel C621A	Carriers for hard drives	Yes
Number of sockets for the processor	2	Number of PCI-E expansion slots	3 (Up to 10)
Processor family	Intel Xeon Scalable Gen 3	Rails for 19" rack	Yes
Type of RAM	DDR4	Socket	LGA 4189
Maximum amount of RAM, TB	12	ECC memory support	Yes
Number of RAM slots	32	Type of installed radiators	Standard efficiency radiator
The form factor of hard drive bays	SFF 2,5"	Device type	Server platform
Number of hard drive bays	25		
Management and monitoring			
Control port	10/100/1000BaseT		
Interfaces			
10/100/1000BaseT interfaces	2		
Power supply			
Supply voltage	220V AC		
Power supply units (PSU)	2		
Power per PSU, W	800		
Physical characteristics			
Operating temperature range, °C	From 10 Up to 35		
Chassis dimension	2U		

ORDERING INFORMATION

SNR-SR2325RS	2U SNR-SR2325RS server platform, supporting up to two Intel Xeon Scalable Gen3 processors, DDR4, 25x2.5" SATA HDD, 2x1000Base-T, two 800W redundant power supplies
--------------	--



SNR-SR4324RS

- Modular construction
- Intel Xeon Scalable Gen 3 Processor
- Up to 12TB DDR4 ECC RDIMM
- Up to 24 pcs 2.5"/3.5" SATA/SAS Hot Swappable
- 1200W Power Supply - 2pcs

MAIN FEATURES

Specifications			
Motherboard chipset	Intel C621A	Carriers for hard drives	Yes
Number of sockets for the processor	2	Number of PCI-E expansion slots	3 (Up to 10)
Processor family	Intel Xeon Scalable Gen 3	Rails for 19" rack	Yes
Type of RAM	DDR4	Socket	LGA 4189
Maximum amount of RAM, TB	12	ECC memory support	Yes
Number of RAM slots	32	Type of installed radiators	Standard efficiency radiator
The form factor of hard drive bays	LFF 3,5" / SFF 2,5"	Device type	Server platform
Number of hard drive bays	24		
Management and monitoring			
Control port	10/100/1000BaseT		
Interfaces			
10/100/1000BaseT interfaces	2		
Power supply			
Supply voltage	220V AC		
Power supply units (PSU)	2		
Power per PSU, W	1200		
Physical characteristics			
Operating temperature range, °C	From 10 Up to 35		
Chassis dimension	4U		

ORDERING INFORMATION

SNR-SR4324RS	4U SNR-SR4324RS server platform, supporting up to two Intel Xeon Scalable Gen3 processors, DDR4, 24x2.5"/3.5" SATA HDD, 2x1000Base-T, two 1200W redundant power supplies
--------------	--



SNR-SR4336RS

- Modular construction
- Intel Xeon Scalable Gen 3 Processor
- Up to 12TB DDR4 ECC RDIMM
- Up to 36 pcs 2.5"/3.5" SATA/SAS Hot Swappable
- 1200W Power Supply - 2pcs

MAIN FEATURES

Specifications			
Motherboard chipset	Intel C621A	Carriers for hard drives	Yes
Number of sockets for the processor	2	Number of PCI-E expansion slots	3 (Up to 10)
Processor family	Intel Xeon Scalable Gen 3	Rails for 19" rack	Yes
Type of RAM	DDR4	Socket	LGA 4189
Maximum amount of RAM, TB	12	ECC memory support	Yes
Number of RAM slots	32	Type of installed radiators	Standard efficiency radiator
The form factor of hard drive bays	LFF 3,5" / SFF 2,5"	Device type	Server platform
Number of hard drive bays	36		
Management and monitoring			
Control port	10/100/1000BaseT		
Interfaces			
10/100/1000BaseT interfaces	2		
Power supply			
Supply voltage	220V AC		
Power supply units (PSU)	2		
Power per PSU, W	1200		
Physical characteristics			
Operating temperature range, °C	From 10 Up to 35		
Chassis dimension	4U		

ORDERING INFORMATION

SNR-SR4336RS	Server platform 4U SNR-SR4336RS, supporting up to two Intel Xeon Scalable Gen3 processors, DDR4, 36 x 2.5"/3.5" SATA HDD, 2x1000Base-T, two 1200W redundant power supplies
--------------	--



SNR-SR1204RE

- Modular construction
- AMD APU 7002 / 7003 Processor
- Up to 4TB DDR4 ECC RDIMM
- Up to 4 pcs 2.5"/3.5" SATA Hot Swappable
- 550W power supply - 2 pcs

MAIN FEATURES

Specifications			
Motherboard chipset	System on Chip	Carriers for hard drives	Yes
Number of sockets for the processor	2	Number of PCI-E expansion slots	1 (Up to 2)
Processor family	AMD EPYC 7002 / 7003	Rails for 19" rack	Yes
Type of RAM	DDR4	Socket	Socket SP3
Maximum amount of RAM, TB	2	ECC memory support	Yes
Number of RAM slots	32	Type of installed radiators	Standard efficiency radiator
The form factor of hard drive bays	LFF 3,5" / SFF 2,5"	Device type	Server platform
Number of hard drive bays	4		
Management and monitoring			
Control port	10/100/1000BaseT		
Interfaces			
10/100/1000BaseT interfaces	2		
Power supply			
Supply voltage	220V AC		
Power supply units (PSU)	2		
Power per PSU, W	550		
Physical characteristics			
Operating temperature range, °C	From 10 Up to 35		
Chassis dimension	1U		

ORDERING INFORMATION

SNR-SR1204RE	1U SNR-SR1204RE server platform, supporting up to two AMD EPYC processors of the 1st, 2nd, 3rd generation, DDR4, 4x2.5"/3.5" HDD, 2x1000Base-T, two 550W redundant power supplies
--------------	---



SNR-SR1210RE

- Modular construction
- AMD APU 7002 / 7003 Processor
- Up to 4TB DDR4 ECC RDIMM
- Up to 10 pcs 2.5" SATA/SAS Hot-swappable
- 550W power supply - 2 pcs

MAIN FEATURES

Specifications			
Motherboard chipset	System on Chip	Carriers for hard drives	Yes
Number of sockets for the processor	2	Number of PCI-E expansion slots	1 (Up to 2)
Processor family	AMD EPYC 7002 / 7003	Rails for 19" rack	Yes
Type of RAM	DDR4	Socket	Socket SP3
Maximum amount of RAM, TB	2	ECC memory support	Yes
Number of RAM slots	32	Type of installed radiators	Standard efficiency radiator
The form factor of hard drive bays	SFF 2,5"	Device type	Server platform
Number of hard drive bays	10		
Management and monitoring			
Control port	10/100/1000BaseT		
Interfaces			
10/100/1000BaseT interfaces	2		
Power supply			
Supply voltage	220V AC		
Power supply units (PSU)	2		
Power per PSU, W	550		
Physical characteristics			
Operating temperature range, °C	From 10 Up to 35		
Chassis dimension	1U		

ORDERING INFORMATION

SNR-SR1210RE	1U SNR-SR1210RE server platform, supporting up to two AMD EPYC processors of the 1st, 2nd, 3rd generation, DDR4, 10x2.5" HDD, 2x1000Base-T, two 550W redundant power supplies
--------------	---



SNR-SR2208RE

- Modular construction
- AMD APU 7002 / 7003 Processor
- Up to 4TB DDR4 ECC RDIMM
- Up to 8 pcs 2.5"/3.5" SATA/SAS Hot Swappable
- 800W power supply - 2 pcs

MAIN FEATURES

Specifications			
Motherboard chipset	System on Chip	Carriers for hard drives	Yes
Number of sockets for the processor	2	Number of PCI-E expansion slots	3 (Up to 10)
Processor family	AMD EPYC 7002 / 7003	Rails for 19" rack	Yes
Type of RAM	DDR4	Socket	Socket SP3
Maximum amount of RAM, TB	4	ECC memory support	Yes
Number of RAM slots	32	Type of installed radiators	Standard efficiency radiator
The form factor of hard drive bays	LFF 3,5" / SFF 2,5"	Device type	Server platform
Number of hard drive bays	8		
Management and monitoring			
Control port	10/100/1000BaseT		
Interfaces			
10/100/1000BaseT interfaces	2		
Power supply			
Supply voltage	220V AC		
Power supply units (PSU)	2		
Power per PSU, W	800		
Physical characteristics			
Operating temperature range, °C	From 10 Up to 35		
Chassis dimension	2U		

ORDERING INFORMATION

SNR-SR2208RE	2U SNR-SR2208RE server platform, supporting up to two AMD EPYC processors of the 1st, 2nd, 3rd generation, DDR4, 8x3.5"/2.5" HDD, 2x1000Base-T, two 800W redundant power supplies
--------------	---



SNR-SR2212RE

- Modular construction
- AMD APU 7002 / 7003 Processor
- Up to 4TB DDR4 ECC RDIMM
- Up to 12 pcs 2.5"/3.5" SATA/SAS Hot Swappable
- 800W power supply - 2 pcs

MAIN FEATURES

Specifications			
Motherboard chipset	System on Chip	Carriers for hard drives	Yes
Number of sockets for the processor	2	Number of PCI-E expansion slots	3 (Up to 10)
Processor family	AMD EPYC 7002 / 7003	Rails for 19" rack	Yes
Type of RAM	DDR4	Socket	Socket SP3
Maximum amount of RAM, TB	4	ECC memory support	Yes
Number of RAM slots	32	Type of installed radiators	Standard efficiency radiator
The form factor of hard drive bays	LFF 3,5" / SFF 2,5"	Device type	Server platform
Number of hard drive bays	12		
Management and monitoring			
Control port	10/100/1000BaseT		
Interfaces			
10/100/1000BaseT interfaces	2		
Power supply			
Supply voltage	220V AC		
Power supply units (PSU)	2		
Power per PSU, W	800		
Physical characteristics			
Operating temperature range, °C	from 10 to 35		
Chassis dimension	2U		

ORDERING INFORMATION

SNR-SR2212RE	2U SNR-SR2212RE server platform, supporting up to two AMD EPYC processors of the 1st, 2nd, 3rd generation, DDR4, 12x3.5"/2.5" HDD, 2x1000Base-T, two 800W redundant power supplies
--------------	--



SNR-SR2225RE

- Modular construction
- AMD APU 7002 / 7003 Processor
- Up to 8TB DDR4 ECC RDIMM
- Up to 25 pcs 2.5" SATA/SAS Hot-swappable
- 800W power supply - 2 pcs

MAIN FEATURES

Specifications			
Motherboard chipset	System on Chip	Carriers for hard drives	Yes
Number of sockets for the processor	2	Number of PCI-E expansion slots	3 (Up to 10)
Processor family	AMD EPYC 7002 / 7003	Rails for 19" rack	Yes
Type of RAM	DDR4	Socket	Socket SP3
Maximum amount of RAM, TB	8	ECC memory support	Yes
Number of RAM slots	32	Type of installed radiators	Standard efficiency radiator
The form factor of hard drive bays	SFF 2,5"	Device type	Server platform
Number of hard drive bays	25		
Management and monitoring			
Control port	10/100/1000BaseT		
Interfaces			
10/100/1000BaseT interfaces	2		
Power supply			
Supply voltage	220V AC		
Power supply units (PSU)	2		
Power per PSU, W	800		
Physical characteristics			
Operating temperature range, °C	From 10 Up to 35		
Chassis dimension	2U		

ORDERING INFORMATION

SNR-SR2225RE	2U SNR-SR2225RE server platform, supporting up to two AMD EPYC processors of the 1st, 2nd, 3rd generation, DDR4, 25x2.5" HDD, 2x1000Base-T, two 800W redundant power supplies
--------------	---



SNR-SR4224RE

- Modular construction
- AMD APU 7002 / 7003 Processor
- Up to 8TB DDR4 ECC RDIMM
- Up to 24 pcs 2.5"/3.5" SATA/SAS Hot Swappable
- 1200W power supply - 2 pcs

MAIN FEATURES

Specifications			
Motherboard chipset	System on Chip	Carriers for hard drives	Yes
Number of sockets for the processor	2	Number of PCI-E expansion slots	3 (Up to 10)
Processor family	AMD EPYC 7002 / 7003	Rails for 19" rack	Yes
Type of RAM	DDR4	Socket	Socket SP3
Maximum amount of RAM, TB	8	ECC memory support	Yes
Number of RAM slots	32	Type of installed radiators	Standard efficiency radiator
The form factor of hard drive bays	LFF 3,5" / SFF 2,5"	Device type	Server platform
Number of hard drive bays	24		
Management and monitoring			
Control port	10/100/1000BaseT		
Interfaces			
10/100/1000BaseT interfaces	2		
Power supply			
Supply voltage	220V AC		
Power supply units (PSU)	2		
Power per PSU, W	1200		
Physical characteristics			
Operating temperature range, °C	From 10 Up to 35		
Chassis dimension	4U		

ORDERING INFORMATION

SNR-SR4224RE	Server platform 4U SNR-SR4224RE, supporting up to two AMD EPYC processors of the 1st, 2nd, 3rd generation, DDR4, 24x3.5"/2.5" HDD, 2x1000Base-T, two 1200W redundant power supplies.
--------------	--



SNR-SR4236RE

- Modular construction
- AMD APU 7002 / 7003 Processor
- Up to 8TB DDR4 ECC RDIMM
- Up to 36 pcs 2.5"/3.5" SATA/SAS Hot Swappable
- 1200W power supply - 2 pcs

MAIN FEATURES

Specifications			
Motherboard chipset	System on Chip	Carriers for hard drives	Yes
Number of sockets for the processor	2	Number of PCI-E expansion slots	3 (Up to 10)
Processor family	AMD EPYC 7002 / 7003	Rails for 19" rack	Yes
Type of RAM	DDR4	Socket	Socket SP3
Maximum amount of RAM, TB	8	ECC memory support	Yes
Number of RAM slots	32	Type of installed radiators	Standard efficiency radiator
The form factor of hard drive bays	LFF 3,5" / SFF 2,5"	Device type	Server platform
Number of hard drive bays	36		
Management and monitoring			
Control port	10/100/1000BaseT		
Interfaces			
10/100/1000BaseT interfaces	2		
Power supply			
Supply voltage	220V AC		
Power supply units (PSU)	2		
Power per PSU, W	1200		
Physical characteristics			
Operating temperature range, °C	From 10 Up to 35		
Chassis dimension	4U		

ORDERING INFORMATION

SNR-SR4236RE	Server platform 4U SNR-SR4236RE, supporting up to two AMD EPYC processors of the 1st, 2nd, 3rd generation, DDR4, 36x3.5"/2.5" HDD, 2x1000Base-T, two 1200W redundant power supplies.
--------------	--



SNR-SR1204RS

- Classical architecture
- Intel Xeon Scalable Gen 2 family processors
- Up to 3 TB DDR4 2666 MHz ECC RDIMM
- Up to 4 pcs 2.5"/3.5" SATA Hot Swappable
- 550W power supply - 2 pcs

MAIN FEATURES

Specifications			
Motherboard chipset	Intel C621	Carriers for hard drives	Yes
Number of sockets for the processor	2	Number of PCI-E expansion slots	1 (Up to 2)
Processor family	Intel Xeon Scalable Gen 2	Rails for 19" rack	Yes
Type of RAM	DDR4	Socket	FCLGA3647
Maximum amount of RAM, TB	3	ECC memory support	Yes
Number of RAM slots	24	Type of installed radiators	Standard efficiency radiator
The form factor of hard drive bays	LFF 3,5" / SFF 2,5"	Device type	Server platform
Number of hard drive bays	4		
Management and monitoring			
Control port	10/100/1000BaseT		
Interfaces			
10/100/1000BaseT interfaces	2		
Power supply			
Supply voltage	220V AC		
Power supply units (PSU)	2		
Power per PSU, W	550		
Physical characteristics			
Operating temperature range, °C	From 10 Up to 35		
Chassis dimension	1U		

ORDERING INFORMATION

SNR-SR1204RS	1U SNR-SR1204RS server Platform, supporting up to two Intel Xeon Scalable processors, DDR4, 4x2.5"/3.5" HDD, 2x1000Base-T, two 550W redundant power supplies.
--------------	---



SNR-SR1210RS

- Classical architecture
- Intel Xeon Scalable Gen 2 family processors
- Up to 3 TB DDR4 2666 MHz ECC RDIMM
- Up to 10 pcs 2.5" SATA/SAS Hot-swappable
- HBA LSI 2008
- 550W power supply - 2 pcs

MAIN FEATURES

Specifications			
Motherboard chipset	Intel C621	Carriers for hard drives	Yes
Number of sockets for the processor	2	Number of PCI-E expansion slots	1 (Up to 2)
Processor family	Intel Xeon Scalable Gen 2	Rails for 19" rack	Yes
Type of RAM	DDR4	Socket	FCLGA3647
Maximum amount of RAM, TB	3	ECC memory support	Yes
Number of RAM slots	24	Type of installed radiators	Standard efficiency radiator
The form factor of hard drive bays	SFF 2,5"	Device type	Server platform
Number of hard drive bays	10		
Management and monitoring			
Control port	10/100/1000BaseT		
Interfaces			
10/100/1000BaseT interfaces	2		
Power supply			
Supply voltage	220V AC		
Power supply units (PSU)	2		
Power per PSU, W	550		
Physical characteristics			
Operating temperature range, °C	from 10 to 35		
Chassis dimension	1U		

ORDERING INFORMATION

SNR-SR1210RS	1U SNR-SR1210RS server Platform, supporting up to two Intel Xeon Scalable processors, DDR4, 10x2.5" HDD, 2x1000Base-T, two 550W redundant power supplies.
--------------	---



SNR-SR2208RS

- Classical architecture
- Intel Xeon Scalable Gen 2 family processors
- Up to 3 TB DDR4 2666 MHz ECC RDIMM
- Up to 4 pcs 2.5"/3.5" SATA Hot Swappable
- 800W power supply - 2 pcs

MAIN FEATURES

Specifications			
Motherboard chipset	Intel C621	Carriers for hard drives	Yes
Number of sockets for the processor	2	Number of PCI-E expansion slots	3 (Up to 10)
Processor family	Intel Xeon Scalable Gen 2	Rails for 19" rack	Yes
Type of RAM	DDR4	Socket	FCLGA3647
Maximum amount of RAM, TB	3	ECC memory support	Yes
Number of RAM slots	24	Type of installed radiators	Standard efficiency radiator
The form factor of hard drive bays	LFF 3,5" / SFF 2,5"	Device type	Server platform
Number of hard drive bays	8		
Management and monitoring			
Control port	10/100/1000BaseT		
Interfaces			
10/100/1000BaseT interfaces	2		
Power supply			
Supply voltage	220V AC		
Power supply units (PSU)	2		
Power per PSU, W	800		
Physical characteristics			
Operating temperature range, °C	From 10 Up to 35		
Chassis dimension	2U		

ORDERING INFORMATION

SNR-SR2208RS	2U SNR-SR2208RS server Platform, supporting up to two Intel Xeon Scalable processors, DDR4, 8x2.5"/3.5" SATA HDD, 2x1000Base-T, two 550W redundant power supplies.
--------------	--



SNR-SR2212RS

- Classical architecture
- Intel Xeon Scalable Gen 2 family processors
- Up to 3 TB DDR4 2666 MHz ECC RDIMM
- Up to 12 pcs 2.5"/3.5" SATA/SAS Hot Swappable
- 800W power supply - 2 pcs

MAIN FEATURES

Specifications			
Motherboard chipset	Intel C621	Carriers for hard drives	Yes
Number of sockets for the processor	2	Number of PCI-E expansion slots	3 (Up to 10)
Processor family	Intel Xeon Scalable Gen 2	Rails for 19" rack	Yes
Type of RAM	DDR4	Socket	FCLGA3647
Maximum amount of RAM, TB	3	ECC memory support	Yes
Number of RAM slots	24	Type of installed radiators	Standard efficiency radiator
The form factor of hard drive bays	LFF 3,5" / SFF 2,5"	Device type	Server platform
Number of hard drive bays	12		
Management and monitoring			
Control port	10/100/1000BaseT		
Interfaces			
10/100/1000BaseT interfaces	2		
Power supply			
Supply voltage	220V AC		
Power supply units (PSU)	2		
Power per PSU, W	800		
Physical characteristics			
Operating temperature range, °C	From 10 Up to 35		
Chassis dimension	2U		

ORDERING INFORMATION

SNR-SR2212RS	2U SNR-SR2212RS server Platform, supporting up to two Intel Xeon Scalable processors, DDR4, 12x2.5"/3.5" SATA HDD, 2x1000Base-T, two 550W redundant power supplies.
--------------	---



SNR-SR2225RS

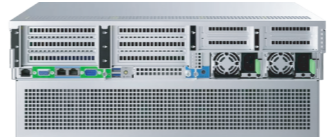
- Classical architecture
- Intel Xeon Scalable Gen 2 family processors
- Up to 3 TB DDR4 2666 MHz ECC RDIMM
- Up to 25 pcs 2.5" SATA/SAS Hot-swappable
- 800W power supply - 2 pcs

MAIN FEATURES

Specifications			
Motherboard chipset	Intel C621	Carriers for hard drives	Yes
Number of sockets for the processor	2	Number of PCI-E expansion slots	3 (Up to 10)
Processor family	Intel Xeon Scalable Gen 2	Rails for 19" rack	Yes
Type of RAM	DDR4	Socket	FCLGA3647
Maximum amount of RAM, TB	3	ECC memory support	Yes
Number of RAM slots	24	Type of installed radiators	Standard efficiency radiator
The form factor of hard drive bays	SFF 2,5"	Device type	Server platform
Number of hard drive bays	25		
Management and monitoring			
Control port	10/100/1000BaseT		
Interfaces			
10/100/1000BaseT interfaces	2		
Power supply			
Supply voltage	220V AC		
Power supply units (PSU)	2		
Power per PSU, W	800		
Physical characteristics			
Operating temperature range, °C	From 10 Up to 35		
Chassis dimension	2U		

ORDERING INFORMATION

SNR-SR2225RS	2U SNR-SR2225RS server Platform, supporting two Intel Xeon Scalable processors, DDR4, 25x2.5" SATA HDD, 2x1000Base-T, two 550W redundant power supplies.
--------------	--



SNR-SR4224RS

- Classical architecture
- Intel Xeon Scalable Gen 2 family processors
- Up to 3 TB DDR4 2666 MHz ECC RDIMM
- Up to 24 pcs 2.5"/3.5" SATA/SAS Hot Swappable
- 1200W power supply - 2 pcs

MAIN FEATURES

Specifications			
Motherboard chipset	Intel C621	Carriers for hard drives	Yes
Number of sockets for the processor	2	Number of PCI-E expansion slots	3 (Up to 10)
Processor family	Intel Xeon Scalable Gen 2	Rails for 19" rack	Yes
Type of RAM	DDR4	Socket	FCLGA3647
Maximum amount of RAM, TB	3	ECC memory support	Yes
Number of RAM slots	24	Type of installed radiators	Standard efficiency radiator
The form factor of hard drive bays	LFF 3,5" / SFF 2,5"	Device type	Server platform
Number of hard drive bays	24		
Management and monitoring			
Control port	10/100/1000BaseT		
Interfaces			
10/100/1000BaseT interfaces	2		
Power supply			
Supply voltage	220V AC		
Power supply units (PSU)	2		
Power per PSU, W	1200		
Physical characteristics			
Operating temperature range, °C	From 10 Up to 35		
Chassis dimension	4U		

ORDERING INFORMATION

SNR-SR4224RS	Server platform 4U SNR-SR4224RS, supporting up to two Intel Xeon Scalable processors, DDR4, 24x2.5"/3.5" HDD SAS/SATA, 2x1000Base-T, two 1200W redundant power supplies.
--------------	--



SNR-SR4236RS

- Classical architecture
- Intel Xeon Scalable Gen 2 family processors
- Up to 3 TB DDR4 2666 MHz ECC RDIMM
- Up to 36 pcs 2.5"/3.5" SATA/SAS Hot Swappable
- 1200W power supply - 2 pcs

MAIN FEATURES

Specifications			
Motherboard chipset	Intel C621	Carriers for hard drives	Yes
Number of sockets for the processor	2	Number of PCI-E expansion slots	3 (Up to 10)
Processor family	Intel Xeon Scalable Gen 2	Rails for 19" rack	Yes
Type of RAM	DDR4	Socket	FCLGA3647
Maximum amount of RAM, TB	3	ECC memory support	Yes
Number of RAM slots	24	Type of installed radiators	Standard efficiency radiator
The form factor of hard drive bays	LFF 3,5" / SFF 2,5"	Device type	Server platform
Number of hard drive bays	36		
Management and monitoring			
Control port	10/100/1000BaseT		
Interfaces			
10/100/1000BaseT interfaces	2		
Power supply			
Supply voltage	220V AC		
Power supply units (PSU)	2		
Power per PSU, W	1200		
Physical characteristics			
Operating temperature range, °C	From 10 Up to 35		
Chassis dimension	4U		

ORDERING INFORMATION

SNR-SR4236RS	Server platform 4U SNR-SR4236RS, supporting up to two Intel Xeon Scalable processors, DDR4, 36 x 2.5"/3.5" HDD SAS/SATA, 2x1000Base-T, two 1200W redundant power supplies.
--------------	--



SNR-SR4210GPU

- Classical architecture
- Intel Xeon Scalable Gen 2 family processors
- Up to 3 TB DDR4 2666 MHz ECC RDIMM
- Up to 4 pcs 2.5"/3.5" SATA/SAS Hot Swappable
- Up to 10 pcs of professional GPU accelerators
- 1200W power supply - 4 pcs

MAIN FEATURES

Specifications			
Motherboard chipset	Intel C621	Carriers for hard drives	Yes
Number of sockets for the processor	2	Number of PCI-E expansion slots	10
Processor family	Intel Xeon Scalable Gen 2	Rails for 19" rack	Yes
Type of RAM	DDR4	Socket	FCLGA3647
Maximum amount of RAM, TB	3	ECC memory support	Yes
Number of RAM slots	24	Type of installed radiators	Standard efficiency radiator
The form factor of hard drive bays	LFF 3,5" / SFF 2,5"	Device type	Server platform
Number of hard drive bays	4		
Management and monitoring			
Control port	10/100/1000BaseT		
Interfaces			
10/100/1000BaseT interfaces	4		
Power supply			
Supply voltage	220V AC		
Power supply units (PSU)	4		
Power per PSU, W	1200		
Physical characteristics			
Operating temperature range, °C	From 10 Up to 35		
Chassis dimension	4U		

ORDERING INFORMATION

SNR-SR4210GPU	Server platform 4U SNR-SR4210GPU, supporting up to two Intel Xeon Scalable processors, DDR4, 4x2.5"/3.5" HDD, 4x1000Base-T, four 1200W power supplies, up to 10 GPU cards.
---------------	--



EXPANSION BASKETS

ORDERING INFORMATION

SNR-SL201-2.5	Expansion Basket for 2 2.5" SATA/SAS Disks for RS/RE Series SNR Servers
SNR-SL201-3.5	Expansion Basket for 2 3.5" SATA/SAS Disks for RS/RE Series SNR Servers
SNR-SL201-U.2	Expansion Basket for 2 2.5" U.2 disks for RS/RE Series SNR servers
SNR-RM1110-BP-NV-PK	NVME Backplane Kit for SNR-SR1310RS
SNR-RM2112-BP-NV-PK	NVME Backplane Kit for SNR-SR2312RS



POWER SUPPLY UNITS

ORDERING INFORMATION

SNR-GC550PMP	SNR Server Power Supply Unit, 550W, GC550PMP
SNR-GC800PMP	SNR Server Power Supply Unit, 800W, GC800PMP
SNR-GC1300PMP	SNR Server Power Supply Unit, 1300W, GC1300PMP
SNR-GC1600PMP	SNR Server Power Supply Unit, 1600W, GC1600PMP



ADAPTERS

ORDERING INFORMATION

PCIe 3.0:	
SNR-RM1110-PCIEIB2	1x PCI-Ex16 Adapter for SR 1U RS/RE Series Servers
SNR-RM2112-PCIEB1	1x PCI-Ex16 / 1x PCI-E x8 Adapter for RS/RE Series SNR 2U Servers
SNR-RM2112-PCIEIB2	3xPCIEx8 Adapter for RS/RE RM2112-PCIEIB2 PCBA VER.B Series SNR 2U Servers
SNR-RM2112-PCIEB3	2x PCIe x8 Adapter for SNR 2U RS/RE Series Servers
SNR-RM2112-PCIEIB4	2x PCIe x8 Adapter for SNR 2U, 4U RS/RE Series Servers, slot4 SNRRM2112-PCIEIB4
PCIe 4.0:	
SNR-SL2112-748-PCIEI3-M	Adapter 1x PCIe 4.0x16 / 2xPCIe 4.0x8 HH for SNR 2U RS/RE Series Servers
SNR-SL2112-748-PCIEI4-M	2x PCIe 4.0x16 FH Adapter for SNR 2U RS/RE Series Servers
SNR-SL1104-748-PCIEI-M	1x PCIe 4.0 x16 Adapter for SR 1U RS/RE Series Servers



COOLING FANS

ORDERING INFORMATION

SNR-GBGX8038-155H-L70-6P	Cooling fan for SNR server, 2U
SNR-GFC0412DS-SM06WQJ	Cooling fan for SNR server, 1U

NAG is a leading telecom and IT solution provider representing a 20-year history of expertise. NAG has been working with a large number of customers in the CIS and around the world since 2004 providing the following solutions:

- full range of equipment for telecom operators;
- L2 and L3 Networking solutions;
- SOHO WiFi Routers and IPTV STB equipment;
- intelligent video surveillance systems with built-in analytics;
- Servers and Storages;
- Infrastructure and Power supply solutions.

With over 650 dedicated employees, including a strong engineering team of 150+ employees, NAG operate offices in Dubai (UAE), Almaty (Kazakhstan) and Tashkent (Uzbekistan). Our logistics centers in Washington (USA) and Shanghai (China) allow working directly with foreign partners and ship out goods with the highest quality and optimized timelines.

**UAE, DUBAI**

Office M-03, Al Garhoud Business
center Building
+971 0 42599967
sales@snr.global

**KAZAKHSTAN, ALMATY**

151, Abay Ave., BC Alatau
+7 727 344 34 44
sales@nag.kz

**UZBEKISTAN, TASHKENT**

Mirzo-Ulugbek district,
st. Sairam 7-tor, d.52
+998 55 508 0660
sales@nag.uz



nao[®]
Follow the Expert

— developer of equipment and solutions for the telecommunications industry, industry and business. We have accumulated extensive experience in the development and construction of communication networks, data transmission networks, as well as network infrastructures and information security systems.

